


# Dr CHOUKROUN PRF SEMINAR

 course in english



**A-PRF**  
CHOUKROUN  
Advanced PRF

**S-PRF**  
CHOUKROUN  
Sticky bone

**i-PRF+**  
CHOUKROUN  
Facial Aesthetics

# London

## 13-14<sup>th</sup> March 2020



## PLATELET RICH FIBRIN - PRF - COURSE

**The latest updates from the inventor of PRF :**

**A-PRF**  
CHOUKROUN

**S-PRF**  
CHOUKROUN

**i-PRF+**  
CHOUKROUN

1/ The latest updates: A-PRF, S-PRF, i-PRF+, Sticky Bone with variable density.

2/ Peri-implantitis and marginal bone loss: The literature and research has failed in explanation of peri-implantitis and bone loss in native and grafted bone, although these mechanisms are explained perfectly in manuals of Human Anatomy&Physiology. But the solution is finally here!



Soft tissue management



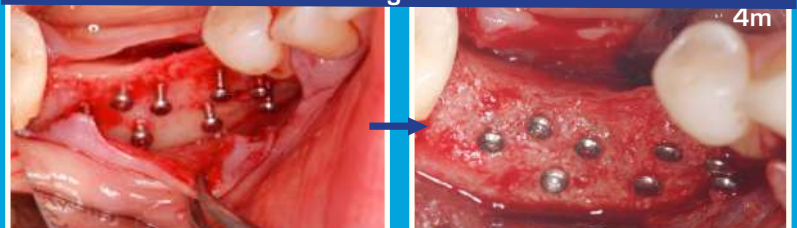
Large membrane



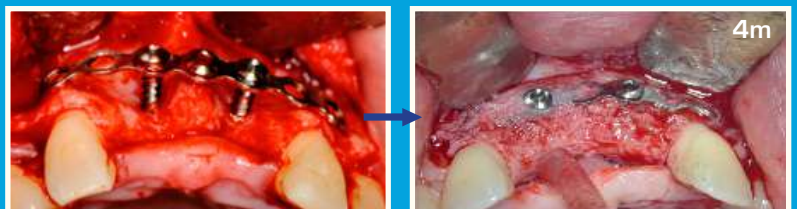
Sticky Bone



Bone augmentations



Socket preservation





## DAY 1: Friday 13<sup>th</sup> March 2020

- Relevance of protocols with the **concept of low speed centrifugation** (LSCC): A-PRF, i-PRF+, Sticky Bone, interest of preoperative injection of liquid PRF
- Indications and instructions for use
- Biological factors for **long-term success**: Tension, Pressure, Vitamin D, Cholesterol.
- **Peri-implantitis and bone loss**: Physiological approach. Prevention and solutions
- Presentation of **clinical cases** and protocols according to indications.
- **Live demonstration**

### + Hands on, demo

- 📅 08.00 - 08.30 : Welcome & Registration
- 08.30 - 10.30 : Conference
- 10.30 - 11.00 : Coffee Break
- 11.00 - 13.00 : Conference
- 13.00 - 14.00 : Lunch
- 14.00 - 15.00 : Conference
- 15.00 - 15.30 : Coffee Break
- 15.30 - 17.00 : Handling Demonstration  
Question and Answer Session

## DAY 2: Saturday 14<sup>th</sup> March 2020

### Phlebotomy & suture technique :

In order to maximize the potential of the PRF™ you need to be competent and able to draw blood from your patient. There will be a phlebotomy course, including a hands-on session. Hands on mannequins and "live on humans".  
**New PRF protocols presentation**

### + Hands on, demo

- 📅 08.00 - 08.30 : Welcome & Registration
- 08.30 - 10.30 : New protocols
- 10.30 - 11.00 : Coffee Break
- 11.00 - 12.30 : Phlebotomy course
- 12.30 - 13.30 : Lunch
- 13.30 - 17.00 : Hands on Training Session



## 📍 Venue : The Rembrandt Hotel

Address: 11 Thurloe Place, Knightsbridge, London SW7 2RS



**Contact : Dental Iceberg - Website:** [www.dentaliceberg.co.uk](http://www.dentaliceberg.co.uk)  
**E-mail:** [info@dentaliceberg.com](mailto:info@dentaliceberg.com) - **Tel:** +44(0)7399257896



**Course price : Early bird\*\* : Day 1 only: £450\* - Both days: £699\***  
**Standard : Day 1 only: £490\* - Both days: £799\***

\*Including lunch and coffee breaks

\*\*Early bird price is valid on registrations completed until 31 December 2019.



**Registration :** online payment via website: [www.dentaliceberg.co.uk](http://www.dentaliceberg.co.uk)